

# Iminster Avenue Nursery School



Part of the



## Safeguarding and Child Protection Policy

Review Cycle	Date of Current Policy	Author of Current Policy	Review Date
Annual	12/9/22		12.9.23

### Ratification

Role	Name	Signature	Date
Chair of Governors	Marianne Croft		
Head Teacher	Mandy Collier-King		

Date	Details
01/09/2022	Update and re-written to reflect statutory guidance issued 2022
11/9/2023	Update in line with KCSIE 2023
6.9.24	Update in line with KCSIE 2024

# Contents

---

## Part 1: Policy

1.1	<a href="#">Definitions</a>	3
1.2	<a href="#">Introduction</a>	3
1.3	<a href="#">Equalities Statement</a>	5
1.4	<a href="#">Overall Aims</a>	5
1.5	<a href="#">Professional expectations, roles and responsibilities</a>	6
1.6	<a href="#">Safeguarding Training for staff</a>	8
1.7	<a href="#">Safeguarding on the curriculum</a>	9
1.8	<a href="#">Safer Recruitment and Safer Working Practice</a>	10
1.9	<a href="#">Key Safeguarding Areas</a>	11

## Part 2: Procedures

2.1	<a href="#">Reporting Concerns</a>	12
2.2	<a href="#">Information Sharing</a>	12
2.3	<a href="#">Identifying and monitoring the needs of vulnerable learners.</a>	13
2.4	<a href="#">Multi Agency Working</a>	14
2.5	<a href="#">Suspensions, permanent exclusions and commissioning alternative provisions</a>	14
2.6	<a href="#">Children Missing from Education</a>	15
2.7	<a href="#">Respond to incidents of child on child harm.</a>	16
2.8	<a href="#">Responding to allegations of abuse made against professionals</a>	18
2.9	<a href="#">Mental health and wellbeing.</a>	19
2.10	<a href="#">Online Safety</a>	20

## APPENDICES

<a href="#">Appendix A Key Documentation</a>	21
<a href="#">Appendix B Reporting Concerns</a>	21
<a href="#">Appendix C Dealing with a Disclosure of Abuse</a>	27
<a href="#">Appendix D Types of Abuse and Neglect</a>	27
<a href="#">Appendix E Specific actions to take on topical safeguarding issues</a>	29
<a href="#">Appendix F – Safer Recruitment and DBS checks policy and procedures.</a>	35
<a href="#">Appendix G –Managing Allegations Policy and Procedures.</a>	41

## PART 1: Policy

---

## 1.1 Definitions

**Safeguarding** is defined as:

- Protecting children from maltreatment;
- Preventing impairment of children's mental and physical health or development.
- Ensuring that children grow up in circumstances consistent with the provision of safe and effective care.
- And taking action to enable all children to have the best outcomes.

**Child Protection** is defined in the Children Act 1989 (s.47) as when a child is suffering or is likely to suffer significant harm. Under statutory guidance and legislation action must be taken to safeguard and promote the child's welfare.

## 1.2 Introduction

At **Iminster Avenue Nursery School**

- Safeguarding and promoting the welfare of children is **everyone's** responsibility. **Everyone** who comes into contact with children, their families and carers, has a role to play.
- In order to fulfil this responsibility effectively, all professionals should make sure their approach is child-centred. This means that they should always consider what is in the **best interests** of the child.
- We take an '**it can happen here**' approach where safeguarding is concerned.
- **Everyone** who comes into contact with children has a role to play in identifying concerns, sharing information, taking prompt action and providing Early Intervention.
- Victims of harm should **never** be given the impression that they are creating a problem by reporting abuse, neglect, exploitation, sexual violence, or sexual harassment. Nor should a victim ever be made to feel ashamed for making a report.

**Iminster Avenue Nursery School** is committed to safeguarding and promoting the welfare of children by:

- The provision of a safe environment in which children can learn.
- Acting on concerns about a child's welfare immediately.
- Fulfilling our legal responsibilities to identify children who may need early help or who are suffering, or are likely to suffer, significant harm.

All action taken by **Iminster Avenue Nursery School** will be in accordance with:

- **Current legislation** (these are summarised within [Working Together to Safeguard Children: statutory framework](#))
- **Statutory, national, and local guidance – this includes:**
  - **Working Together to Safeguard Children (2018)**, which sets out the multiagency working arrangements to safeguard and promote the welfare of

children and young people and protect them from harm; in addition, it sets out the statutory roles and responsibilities of schools.

- **Keeping Children Safe in Education (2023)** is statutory guidance issued by the Department for Education which all schools and colleges must have regard to when carrying out their duties to safeguard and promote the welfare of children.
- **Early Years Foundation Stage statutory framework (2021)** is statutory guidance which sets standards that school and childcare providers must meet for the learning, development, and care of children from birth to 5.
- **Local Guidance from the Local Safeguarding Partnership:** around particular safeguarding topics are available on the [Keeping Bristol Safe Partnership Website](#).
- **Government guidance in relation to:**
  - **COVID19:** The government has removed the remaining restrictions in England. **Iminster Avenue Nursery School** have created an addendum to this document to be used in the event of a further lockdown. This includes arrangements for Safeguarding and/or remote working and learning. The document will be republished and circulated in the event of it being required.
  - **Specific topical safeguarding issues** – a collection of up-to-date guidance can be found on the Safeguarding in Education Team's guidance page. [Key Guidance: Safeguarding in Education](#)

**This policy should be read in conjunction with the following policies:**

- Recruitment and Selection
- Whistleblowing and Public Interest Disclosure
- Code of Conduct for Staff
- Low-level Safeguarding Concerns Policy
- Supervision Policy (staff)
- Behaviour
- Anti-bullying policy
- Online-Safety
- ICT and internet acceptable use (includes cameras)
- Policy on Supporting Children in Care
- Attendance (including the safeguarding response to children who go missing from education)
- Health and Safety

Head teachers/principals should ensure that the above policies and procedures, adopted by governing bodies and proprietors, are accessible, understood and followed by all staff.

## 1.3 Equalities and Rights Statement

With regards to safeguarding we will consider our duties under the [Equality Act 2010](#) and our general and specific duties under the [Public Sector Equality Duty](#). General duties include:

1. Eliminate discrimination, harassment, victimisation, and other conduct that is prohibited by the Equality Act 2010.
2. Advance equality of opportunity between people who share a protected characteristic and people who do not share it.
3. Foster good relations across all protected characteristics between people who share a protected characteristic and people who do not share it.

Details of our specific duties are published under **Iminster Avenue Nursery School'** equality statement and measurable objectives. **These are available on our website.**

We adhere to both the [Bristol Equality Charter](#) and [Bristol Childrens Charter](#) with a view to contribute towards the [One City Plan](#).

Staff are aware of the additional barriers to recognising abuse and neglect in children with Special Educational Needs and Disabilities (SEND). This will be in line with our Special Educational Needs and Disability Policy.

**Iminster Avenue Nursery School** also adheres to the principals of and promotes anti-oppressive practice in line of the [United Nations Convention of the Rights of the Child](#) and the [Human Rights Act 1998](#).

## 1.4 Overall Aims

This policy will contribute to the safeguarding of children at **Iminster Avenue Nursery School** by:

- Clarifying safeguarding expectations for members of the education setting's community, staff, governing body, learners, and their families.
- Contributing to the establishment of a safe, resilient, and robust safeguarding culture in the setting built on shared values; that learners are treated with respect and dignity, taught to treat each other and staff with respect, feel safe, have a voice and are listened to.
- Supporting contextual safeguarding practice recognising that the setting's site can be a location where harm can occur.
- Setting expectations for developing knowledge and skills within the setting's community (staff, learners, parents/carers) to the signs and indicators of safeguarding issues and how to respond to them.
- Early identification of need for vulnerable learners and provision of proportionate early interventions to promote their welfare and safety.
- Working in partnership with learners, parents, and other agencies in the Local Safeguarding Partnership.

**Iminster Avenue Nursery School** is named as a relevant agency in the Local Safeguarding Partnership (Keeping Bristol Safe Partnership). This policy sets out its

statutory duty to co-operate, follow and comply with published arrangements as set out by the Keeping Bristol Safe Partnership.

## 1.5 Professional expectations, roles, and responsibilities

### 1.5.1 Role of all staff

- All staff will read and understand Part 1 of statutory guidance Keeping Children Safe in Education (2024). Those working directly with children will also read Annex B.
- In addition to this all staff will be aware of the systems in place which support safeguarding including reading this Safeguarding/Child Protection Policy; the Behaviour Policy; the Staff Code of Conduct; safeguarding response to children who go missing from education; and the role of the Designated Safeguarding Lead (DSL)
- In addition to this all staff will be aware of the systems in place with regard to use of mobile phones and cameras which can be a particular concern because of the young age of the children. We have a separate mobile phone policy and policy relating to use of ICT and the internet which cover these issues in more detail.
- Know who and how to contact the DSL and any deputies, the Chair of Governors, and the Governor responsible for safeguarding.
- All staff will be able to identify vulnerable learners and take action to keep them safe. Information or concerns about learners will be shared with the DSL where it includes those:
  - who may need a social worker and may be experiencing abuse, neglect or exploitation;
  - requiring mental health support;
  - may benefit from early help and intervention;
  - where there is a radicalisation concern;
  - where a crime may have been committed.
- Be clear as to the setting's policy and procedures about [child on child abuse](#), children missing education and [those requiring mental health support](#), and the [impact of technology in relation to online safety](#).
- Be involved where appropriate, in the implementation of individual plans to further safeguard vulnerable learners and understand their academic progress and attainment and maintain a culture of high aspirations for this cohort.
- Record concerns appropriately and in a timely manner by using the setting's safeguarding systems.
- To be aware of the need to raise to the senior leadership team any concerns they have about safeguarding practices within the school.

### 1.5.2 - Role of the Designated Safeguarding Lead (DSL)

Duties are further outlined in Keeping Children Safe in Education (2022, Annex C)

Details of our DSL and Deputy DSL are available on the **Iminster Avenue Nursery School** website, our newsletters, or the notice board in reception.

- The DSL, alongside the Deputy DSL undertakes lead responsibility for safeguarding and child protection within the setting. This responsibility is explicit in the role holder's job description.
- The DSL is the headteacher, taking lead responsibility for promoting educational outcomes by knowing the welfare, safeguarding and child protection issues that learners in need are experiencing or have experienced, and identifying the impact that these issues might be having on learner's attendance, engagement and achievement at school or college.
- Activities include the management of work undertaken by the Deputy DSL.
- Manages early identification of vulnerability of learners and their families from staff through cause for concerns or notifications. This will ensure detailed, accurate, secure written records of concerns and referrals.
- Manages referrals to local safeguarding partners where learners with additional needs have been identified. These can include those –
  - who need a social worker and may be experiencing abuse, neglect or exploitation;
  - requiring mental health support;
  - who may benefit from early help and intervention;
  - where there is a radicalisation concern;
  - where a crime may have been committed.

## The DSL will also:

- Work with others – acting as a point of contact for outside agencies about safeguarding.
- Support and advise other staff in making referrals to other agencies.
- When required, liaise with the case manager and the Local Authority Designated Officer (LADO) in relation to child protection cases which concern a staff member.
- Coordinate safeguarding training and raise awareness and understanding to the school community around policies and practice in relation to safeguarding.
- Help promote educational outcomes by sharing information about vulnerable learners with relevant staff. This includes ensuring that staff:
  - know who these children are,
  - understand their academic progress and attainment and maintain a culture of high aspirations for this cohort.
  - Are supported to identify the challenges that children in this group might face.
  - Provide additional academic support or make reasonable adjustments to help children who have **or have had** a social worker to reach their potential.
- Ensure the successful transfer of the Safeguarding/Child Protection File when a learner moves on to a new setting within 5 days for in year transfer or the first 5 days of the start of a new term.
- Ensure appropriate safeguarding cover and availability during term time/ any out of hours/out of term activities managed by the school.
- The Deputy DSL will inform the DSL/headteacher of enquiries under s.47 of the Children Act 1989 and any police investigations. This includes the need to be aware of the requirement for children to have an Appropriate Adult. Further information can be found in the Statutory guidance - [PACE Code C 2019](#).



## 1.5.3 - Role of the Governing Body –

Duties are further outlined in Keeping Children Safe in Education (2023, Part 2)

- The governing body will ensure that all governors and trustees receive appropriate safeguarding and child protection (including online) training at induction. This training should equip them with the knowledge to provide strategic challenge to test and assure themselves that the safeguarding policies and procedures in place in the setting are effective and support the delivery of a robust whole setting approach to safeguarding. This training will be regularly updated.
- There is a senior board level lead who takes responsibility for the setting's safeguarding responsibility to ensure that safeguarding and child protection practice, process, and policy (including online safety) is effective and is compliant with legislation, statutory guidance, and Local Safeguarding Partnership arrangements.
- The appointed Safeguarding Governor will liaise with the Head teacher/ DSL to produce an annual report for governors and complete the S. 175 (annual safeguarding) audit for the Keeping Bristol Safe Partnership;
- Ensure that the school remedies any deficiencies or weaknesses brought to its attention without delay;
- Ensure that this document is updated annually (or when there are significant updates)
- Ensure that the DSL is an appropriate senior member of setting's senior leadership team and ensure that they have adequate time, funding, training, resources, and support to carry out their role effectively.
- Ensure that the training and learning for the school community is robust and effective.
- Ensure that learners are taught about safeguarding on the curriculum including online safety in compliance with statutory guidance [Early years foundation stage \(EYFS\) statutory framework - GOV.UK \(www.gov.uk\)](#)
- To ensure that teachers, including supply teachers, other staff, volunteers, and contractors have appropriate checks carried out in line with statutory guidance Keeping Children Safe In Education (2023, Part 3).
- Ensure that there are procedures in place to manage safeguarding concerns or allegations against teachers, including supply teachers, other staff, volunteers, and contractors who may not be suitable to work with or pose a risk to learners, this includes having a process to manage low level concerns.
- Ensure that systems are in place for learners to effectively share a concern about a safeguarding issue they are experiencing, express their views and give feedback.
- Ensure that the setting has systems in place to prevent, identify and respond to child on child harm (including sexual abuse and sexual harassment) and mental health concerns, and review the effectiveness of the setting's online safety practices.
- Appoint a designated teacher to promote the educational achievement for children in care and other care arrangements.

## 1.6 Safeguarding training for staff

### 1.6.1 - All staff:

- Governing bodies and proprietors will ensure that all staff members undergo safeguarding and child protection (including online safety) training at induction.



- Will receive appropriate safeguarding and child protection (including online safety) refresher training at least on annually (via formal training, bulletins and staff meetings).
- Regular staff supervision is provided to support staff including in their safeguarding role. They are given the opportunity to discuss individual staff's concerns re children's development or well-being including child protection or safeguarding concerns. Supervision also provides the opportunity to identify solutions to address issues (as they arise), support staff well-being including providing coaching to improve personal effectiveness.
- All staff must complete FGM awareness training and will understand their legal duty under the Mandatory Reporting Duty.
- All staff must complete PREVENT awareness training. This is to ensure that they can comply with the legal expectations under the PREVENT duty.
- Staff training includes clear reference to internal whistleblowing policy and guidance for escalating concerns.

## **1.6.2 - Designated Safeguarding Lead and deputies:**

- Will undergo formal training to provide them with the knowledge and skills (including online safety) training required to carry out the role. The training will be updated at least every two years.
- The Deputy will be trained to the same level as the DSL.
- The DSL and the deputy DSL will liaise with the Local Safeguarding Partnership to ensure that their knowledge and skills are updated via e-bulletins, attend DSL network meetings, and take time to read and digest safeguarding bulletins.

## **1.6.3 - Other training considerations:**

- The governing body will ensure that at least one person on any appointment panel will have undertaken safer recruitment training, in line School Staffing (England) Regulations 2009.
- Members of the Senior Leadership Team will make themselves aware of and understand their role within the local safeguarding arrangements. This will ensure that those who have responsibility for the management of behaviour, inclusion, Special Educational Needs, attendance, and exclusions will carry out their duties with a safeguarding consideration.
- The Designated Teacher for Children in Care will undergo appropriate training to fulfil their role to promote the educational achievement of registered pupils who are in care.
- The mental health lead has access to appropriate training.
- Training around safeguarding topics in Annex B (including online safety) will be integrated, aligned, and considered as part of a whole school safeguarding approach.
- Appropriate colleagues have received appropriate training in relation to use of reasonable force and positive handling.

## 1.7 Safeguarding in the curriculum

**Ilminster Avenue Nursery School** is dedicated to ensuring that learners are taught about safeguarding, including online safety in an age appropriate way. We recognise that a one size fits all approach may not be appropriate for all learners, and a more personalised or contextualised approach for more vulnerable learners, victims of abuse and some SEND children might be needed. This is part of a broad and balanced curriculum.

This includes:

- Working within statutory guidance in respect to the [Early years foundation stage \(EYFS\) statutory framework - GOV.UK \(www.gov.uk\)](https://www.gov.uk/government/publications/early-years-foundation-stage-statutory-framework)
- Personal, Social, Emotional (and health) (PSED) education, to explore key areas such as self-esteem, emotional literacy, assertiveness, power, building resilience to radicalisation, e-safety and bullying.
- Appropriate filters and monitoring systems are in place to ensure that 'over-blocking' does not lead to unreasonable restrictions as to what learners can be taught about online teaching and safeguarding.
- The curriculum will be shaped to respond to safeguarding incident patterns in the setting identified by the Designated Safeguarding Lead and safeguarding team (e.g., to respond to an increase in bullying incidents).
- Providing engagement opportunities with parents and carers to consult on key aspects of the curriculum.
- Learners can inform the curriculum via discussions within their key group/with their key worker.

## 1.8 Safer recruitment and safer working practice

### 1.8.1 - Safer recruitment

**Ilminster Avenue Nursery School** pays full regard to the safer recruitment practices detailed in 'Keeping Children Safe in Education' (2023; Part 3). Detailed information is found in Appendix F.

- This includes scrutinising applicants, verifying identity and academic or vocational qualifications, obtaining professional and character references, checking previous employment history, and ensuring that a candidate has the health and physical capacity for the job. References are always obtained, scrutinised and concerns resolved satisfactorily before appointment is confirmed.
- It also includes undertaking appropriate checks through the Disclosure and Barring Service (DBS), the barred list checks and prohibition checks (and overseas checks if appropriate), dependent on the role and duties performed, including regulated and non-regulated activity.
- In addition, as part of the shortlisting process **Ilminster Avenue Nursery School** will consider carrying out an online search as part of their due diligence on the shortlisted candidates. This may help identify any incidents or issues that have happened, and are publicly available online, which the setting might want to explore with the applicant at interview.

- All recruitment materials will include reference to **Iminster Avenue Nursery School's** commitment to safeguarding and promoting the wellbeing of learners.

## 1.8.2 - Use of reasonable force

'Reasonable force' refers to the physical contact to restrain and control children using no more force than is needed.' The use of reasonable force is down to the professional judgement of the staff member concerned and will be determined by individual circumstances and the vulnerability of any child with Special Educational Needs or Disability (SEND) will be considered.

- The use of reasonable force will be minimised through positive and proactive behaviour support and de-escalation and will follow government guidance ([Use of Reasonable Force in Schools 2013](#); [Reducing the need for restraint and restrictive intervention, 2019](#)).
- There is robust recording of any incident where positive handling or restraint has been used. Further review of the incident is carried out to reflect on how the incident could be avoided, this will involve the child and their family.

The process around how the setting manages concerns where a professional may pose a risk to learners and our response to low level concerns can be accessed in section [2.8 Allegations of abuse made against professionals](#).

## 1.8.3 - Whistleblowing procedures

Staff are aware of the following whistleblowing channels for situations where they feel unable to raise an issue with the senior leadership team or feel that their genuine concerns are not being addressed:

- General guidance can be found at: Advice on whistleblowing <https://www.gov.uk/whistleblowing>.
- The NSPCC whistleblowing helpline is available [here](#) for staff who do not feel able to raise concerns regarding child protection failures internally. Staff can call: 0800 028 0285 – line is available from 8:00 AM to 8:00 PM, Monday to Friday and Email: [help@nspcc.org.uk](mailto:help@nspcc.org.uk).
- The above channels are clearly accessible to all staff (in the staff handbook, code of conduct and staff notice boards).

## 1.9 Key safeguarding areas

These topics are themes that can impact on children and families, there are specific areas of safeguarding that the setting has statutory responsibilities to address which are hyperlinked:

- Children in the court system
- Children affected by parental offending/imprisonment.
- [Children missing from education](#) – including persistent absence.
- [Child Exploitation](#) (including both Child Sexual Exploitation and Child Criminal Exploitation and county lines, modern day slavery and trafficking)
- Cybercrime

- [Domestic Abuse](#)
- Homelessness
- So-called Honour based Abuse (including Female Genital Mutilation and Forced Marriage),
- [Online Safety](#)
- [Mental health](#)
- [Child on child abuse:](#)
  - Bullying (including cyberbullying, prejudice-based and discriminatory bullying).
  - Abuse in intimate personal relationships between children (also known as teenage relationship abuse).
  - Physical abuse such as hitting, kicking, shaking, biting, hair pulling, or otherwise causing physical harm (this may include an online element which facilitates, threatens and/or encourages physical abuse).
  - Sexual violence, such as rape, assault by penetration and sexual assault; (this may include an online element which facilitates, threatens and/or encourages sexual violence).
  - Sexual harassment, such as sexual comments, remarks, jokes and online sexual harassment, which may be standalone or part of a broader pattern of abuse.
  - Causing someone to engage in sexual activity without consent, such as forcing someone to strip, touch themselves sexually, or to engage in sexual activity with a third party.
  - Consensual and non-consensual sharing of nudes and semi-nude images and or videos (also known as sexting or youth produced sexual imagery).
  - Upskirting, which typically involves taking a picture under a person's clothing without their permission, with the intention of viewing their genitals or buttocks to obtain sexual gratification, or cause the victim humiliation, distress, or alarm; and
  - Initiation/hazing type violence and rituals (this could include activities involving harassment, abuse or humiliation used as a way of initiating a person into a group and may also include an online element).
- [Preventing Radicalisation \(The Prevent Duty\)](#)
- [Serious Youth Violence](#)
- Substance Misuse
- [Private Fostering](#)
- [Young Carers](#)

Additional information about key safeguarding areas can also be found in Keeping Children Safe in Education (2022; Annex B); the [NSPCC website - Types of Abuse](#); And for localised resources for education settings [The Bristol Safeguarding in Education website](#).

## PART 2: Procedures

### 2.1 Reporting concerns

All staff are clear about recording and reporting concerns to the DSL/DSL deputies in a timely way. In the case a learner is in immediate danger, staff should phone the police.

All staff are aware of and follow the procedures to respond to a concern about a child detailed in [Appendix B](#). This includes responses to child-on-child harm and learners who present with a mental health need.

At **Iminster Avenue Nursery School** learners can raise their concerns to their identified key worker or their class teacher and/or another member of staff and they will be treated seriously.

## 2.2 Information Sharing

**Iminster Avenue Nursery School** is committed to have due regard to relevant data protection principles which allow for sharing (and withholding) personal information as provided for in the Data protection Act 2018 and UK General Data Protection Regulations. This includes how to store and share information for safeguarding purposes, including information which is sensitive and personal and should be treated as 'special category personal data'.

Staff at the setting are aware that:

- 'Safeguarding' and 'individuals at risk' is a processing condition that allows practitioners to share special category personal data.
- Practitioners will seek consent to share data where possible in line with [Information Sharing for Safeguarding Practitioners 2018](#).

There may be times when it is necessary to share information without consent such as:

- To gain consent would place the child at risk,
- by doing so will compromise a criminal investigation,
- It cannot be reasonably expected that a practitioner gains consent,
- or, if by sharing information it will enhance the safeguarding of a child in a timely manner, but it is not possible to gain consent.

There are also times when Iminster Avenue Nursery School will not provide pupil's personal data where the serious harm test under legislation is met, (by sharing the information the child may be at further risk). When in doubt Iminster Avenue Nursery School will seek legal advice.

**The Data Protection Act 2018 and UK GDPR do not prevent the sharing of information for the purposes of keeping children safe. Fears about sharing information must not be allowed to stand in the way of the need to safeguard and promote the welfare and protect the safety of children.**

## 2.3 Identifying and monitoring the needs of vulnerable learners.

The DSL and Deputy DSL will regularly review and monitor those students who have been identified as vulnerable. This can include reviewing attendance data, behaviour data, attainment data and safeguarding records. We do this through weekly strategic safeguarding meetings and weekly team safeguarding meetings. This is to ensure that:

- Proportionate and early interventions can be taken to promote the safety and welfare of the child and prevent escalation of harm.
- Information about vulnerable learners is shared with teachers and school and college leadership staff to promote educational outcomes.
- Learners who currently have, or have had, a social worker will have their academic progress and attainment reviewed and additional academic support will be provided to help them reach their full potential.
- Reasonable adjustments are made in relation to school-based interventions – for example responding to behaviour.
- **Iminster Avenue Nursery School** can support learners who may have intersecting protected characteristics. **Iminster Avenue Nursery School** recognises those with protected characteristics are likely to be more vulnerable to negative experiences of discrimination both explicitly and or systemically.
- **Iminster Avenue Nursery School** will work in the **best interests of the child** in compliance with their equality and human rights legal duties.

## 2.4 Multi-agency working

**Iminster Avenue Nursery School** is a relevant agency in the Keeping Bristol Safe Partnership and will work together with appropriate agencies to safeguard and promote the welfare of children including identifying and responding to their needs. This is in compliance with statutory guidance [Working Together to Safeguard Children 2018](#).

Occasions that warrant a statutory assessment under the Children Act 1989:

- If the child is in need under s.17 of the Children Act 1989 (including when a child is a young carer and or subject to a private fostering arrangement).
- Or if the child needs protection under s.47 of the Children Act 1989 where they are experiencing significant harm, or likely to experience significant harm.

Referrals in these cases should be made by the DSL (or Deputy DSLs) to Children's Social Care in the local authority in which that child resides. The list of safeguarding contact and other key agencies are listed in [Appendix B](#).

Where the child already has a social worker, the request for service should go immediately to the social worker involved or, in their absence, to their team manager. If the child is a child in care, notification should also be made to the Hope Virtual School.

**Iminster Avenue Nursery School** will co-operate with any statutory safeguarding assessments conducted by children's social care: this includes ensuring representation at appropriate inter-agency meetings such as integrated support plan meetings initial and review child protection conferences and core group meetings.

### 2.4.1 Additional considerations:

- Where a learner and/or their family is subject to an inter-agency child protection plan or a multiagency risk assessment conference (MARAC) meeting, the setting will contribute to the preparation, implementation, and review of the plan as appropriate.



- In situations where a child in care may be put on to part time timetable, the school will consult with the Hope Virtual School following local procedures. [Attendance and exclusions of children in care](#)
- If a crime has been suspected or committed that involved the bringing of an offensive weapon on to the school site, the setting will liaise with the Local Authority Violence Reduction Unit (Safer Options) who will consider a proportionate response.
- If there is an immediate risk of harm, the police should be called via 999. For other concerns of criminality, the non-statutory guidance [‘When to Call the Police’ from the NPCC](#). If non urgent you should report a crime via 101.
- In the rare event that a child death occurs, or a child is seriously harmed, **Iminster Avenue Nursery School** will notify the Keeping Bristol Safe Partnership as soon as is reasonably possible.

## 2.5 Suspensions, permanent exclusions, and commissioning of Alternative Provisions - (To be read in conjunction with the Behaviour Policy)

When the setting is considering suspending or permanently excluding a learner where additional vulnerability is identified it is important that the learner’s welfare is a paramount consideration. The head teacher will consider their legal duty of care when sending a learner home.

**Iminster Avenue Nursery School** will exercise their legal duties in relation to their interventions. This includes:

- whether a statutory assessment should be considered in line with the principles of [Children Act 1989](#),
- that decisions are made in an anti-discriminatory manner in line with the [Equality Act 2010](#) (including having regard to the [SEND Code of Practice](#))
- and takes into consideration the learner’s rights under the [Human Rights Act 1998](#).
- Interventions will be consistent with statutory guidance [School suspensions and permanent exclusions - GOV.UK \(www.gov.uk\)](#)

### 2.5.1 - Actions to take

- An assessment of need should be undertaken with multi-agency partners with a view to mitigate any identified risk of harm this in line with [2.3 Identifying and monitoring the needs of vulnerable learners](#).
- If the child is subject to a child protection plan or where there is an existing child protection file, we will call a multiagency risk-assessment meeting prior to making the decision to exclude.
- In the event of a one-off serious incident resulting in an immediate decision to exclude, the risk assessment *must* be completed prior to convening a meeting of the governing body.

### 2.5.2 - Commissioning Alternative Provisions

In the event where **Iminster Avenue Nursery School** commissions an Alternative Provision they will follow the [Alternative Learning Provision - bristol.gov.uk](#) and follow local guidance [Commissioning Alternative Learning Provision – Advice for schools, Commissioners, and](#)



[Alternative Providers \(2019\)](#) to ensure clear agreement of roles and responsibilities to maintain safeguarding arrangements for learners who are not taught on site.

**Iminster Avenue Nursery School** will continue to be responsible for the safeguarding of that learner and will make necessary checks on the provider to meet the needs of the learner. Written confirmation from the Alternative provider will be obtained of the checks on staff that we would otherwise perform for our own staff.

## 2.6 **Children Absent from Education** (To be read in conjunction with our Attendance Policy)

Iminster Avenue Nursery School is a Nursery School and attendance is non-statutory. However, we recognise that any learner absent from education is a potential indicator of abuse or neglect, or maybe an indicator of need for early help support.

Staff should follow procedures for unauthorised absence outlined in our Attendance Policy. This identifies how we monitor attendance as well as the way in which we follow up concerns about long-term absence. If have concerns about long term absence we will seek further information which will include, where appropriate, home visits, contacting schools where siblings are known to attend and/or Bristol City Council Education Welfare Service. Where there are safeguarding or child protection concerns as a result of non-attendance staff should follow the procedure outlined in 2.1 reporting a concern.

### 2.6.1 - Elective Home Education

**Iminster Avenue Nursery School** will notify the Local Authority of every learner where a parent has exercised their right to educate their child at home. Safeguarding files should be shared with the Local Authority Elective Home Education service and consideration of whether additional support from children's social care should be made in line with the Children Act 1989.

## 2.7 **Respond to incidents of child-on-child harm.**

(There is flow diagram in [Appendix B](#) that illustrates this section)

All staff should recognise that children can abuse other children (including online). It is important that incidents of abuse and harm are treated under safeguarding policy in conjunction with the behaviour policy. However, concerns regarding the welfare of learners requires process and records to be kept on the child's safeguarding/child protection file.

Further examples of child on child harm this can be found under section [1.9 Key Safeguarding Areas](#). It is recognised that child on child abuse can happen inside and outside of school/college or online.

At Iminster Avenue Nursery School

- We have a 'zero tolerance' approach to abuse. Incidents are taken seriously. These will never be tolerated or passed off as 'banter,' just having a laugh' or 'part of

growing up.' Banter and teasing can and should be acknowledged and recognised as bullying behaviour and may require proportionate intervention.

- Even with a zero-tolerance approach, we take steps to educate and take action ensure to mitigate the risk of contributing to a culture of unacceptable behaviours or a culture that normalises abuse.
- It is understood that child on child harm may reflect equality issues in terms of those who may be targeted are more likely to have protected characteristics.
- Early identification of vulnerability to child-on-child harm is made by reviewing attendance, behaviour, attainment and safeguarding records at least on a termly basis.

There are clear systems in place (which are well promoted, easily understood and easily accessible) for learners to confidently report abuse knowing their concerns will be treated easily as reflected in section [2.1 Reporting a concern](#) of this policy. **Iminster Avenue Nursery School** will handle initial reports of harm by:

- Securing the immediate safety of learners involved in an incident and sourcing support for other young people affected.
- Listening carefully to the child, being non-judgmental, being clear about boundaries and how the report will be progressed, not asking leading questions and only prompting the child where necessary with open questions – where, when, what, etc;
- Ensuring that victims will never be given the impression that they are creating a problem by reporting **any** form of abuse or neglect, sexual violence, or sexual harassment. They will never be made to feel ashamed for making a report.
- All staff should be aware that children may not feel ready or know how to tell someone that they are being abused, exploited, or neglected, and/or they may not recognise their experiences as harmful.
- It is also important that staff determine how best to build trusted relationships with children which facilitates communication.
- Ensuring the child's wishes are taken into consideration in any intervention and any action is taken to ensure safety of the target and other members of the wider peer cohort.
- Not promising confidentiality as it is highly likely that information will need to be shared with others.

## **2.7.1 Actions to take in relation to sexual violence and sexual harassment.**

Reference to Keeping Children Safe In Education (2022, Part 5) should be made in relation to taking protective action. **Iminster Avenue Nursery School** will take the following actions when responding to incidents of sexual violence and sexual harassment:

- Incidents will be reported immediately to the DSL/ Deputy DSL who will undertake further assessment of what action should be taken proportionate to the factors that have been identified. [The Brook - Sexual Behaviours Traffic Light Assessment Tool](#) should be utilised to inform assessment of risk and what actions to subsequently take. This may include seeking specialist advice and guidance from [Be Safe](#).

- DSLs/Deputies will take **proportionate** action and consider whether a case can be managed internally, through early help, or should involve other agencies as required in line with the section [2.4 - Multi-Agency Working section](#).
- When an incident involves an act of **sexual violence** (rape, assault by penetration, or sexual assault) the starting point is that this must be reported to the police immediately **regardless** of the age of criminal responsibility (10 years old). This must be reported directly via 101 for recording purposes and accountability. This is on the understanding that the police will take a welfarist approach rather than a criminal justice one. A concurrent referral to social care must also be made for all children directly involved. A strategy can be requested where education can voice explicitly concerns of criminalisation in a multi-agency context.
- When the children involved require a statutory assessment either under s.17 or s. 47 of the Children Act 1989 a referral to social care should be undertaken.
- Where the report includes an online element, the setting will follow [Searching, screening and confiscation at school - GOV.UK \(www.gov.uk\)](#) and [Sharing nudes and semi-nudes: advice for education settings working with children and young people - GOV.UK \(www.gov.uk\)](#). The key consideration is for staff not to view or forward illegal images of a child. The highlighted advice provides more details on what to do when viewing an image is unavoidable.
- Risk assessments and or safety plans will be developed for individual children who have been involved in an incident. This should be reviewed every 3 months or every time there is an occurrence of an incident. These should involve the child and parents/carers and address contextual risks.

## 2.7.2 - Contextual safeguarding approach to child-on-child harm:

**Ilminster Avenue Nursery School** will minimise the risk of child-on-child abuse by taking a contextual approach to safeguarding by increasing safety in the contexts of which harm can occur – this can include the school environment itself, peer groups and the neighbourhood.

Following any incidents of child-on-child harm, the DSL/Deputies will review and consider whether any practice or environmental changes can be made in relation to any lessons learned. This can include making changes to staffing and supervision, making changes to the physical environment and considering the utilisation and delivery of safeguarding topics on the curriculum.

## 2.8 Allegations of abuse made against professionals

If you have concerns about a member of staff (including a supply teacher, volunteer or contractor), or an allegation is made about a member of staff (including a supply teacher, volunteer or contractor) posing a risk of harm to children.

- **Immediate action must be taken:**
- **Speak to the Head teacher as soon as possible**

- DO NOT speak to the individual it concerns

If the concern relates to Head teacher it should be reported to the Chair of Governors, who will liaise with the [Local Authority Designated Officer \(LADO\)](#) and they will decide on any action required.

If there is a conflict of interest which inhibits this process of reporting, staff can report directly to the LADO.

The headteacher/chair of governors will then follow the procedures set out in **Appendix G** Section1.

Allegations regarding foster carers or anyone in a position of trust working or volunteering with children should be referred to the LADO on the day that the allegation is reported. The allocated social worker should also be informed on the day. The school should not undertake any investigation unless the LADO advises this.

## 2.8.1 Low-level concerns

The term 'low-level' concern is any concern – no matter how small – that an adult working in or on behalf of the school may have acted in a way that:

- / Is inconsistent with the staff code of conduct, including inappropriate conduct outside of work, **and**
- / Does not meet the allegations threshold or is otherwise not considered serious enough to consider a referral to the designated officer at the local authority

- **Speak to the headteacher as soon as possible**
- **DO NOT speak to the individual it concerns**
- **If the concern relates to the headteacher, speak to the chair of governors.**

The headteacher/chair of governors will then follow the procedures set out in Appendix G, Section 2.

Follow the guidelines as set out in the Low-Level Safeguarding Policy. Report concerns using the proforma included in the Policy. These are located in the Staff Room.

## 2.9 Mental health and wellbeing. (A flow diagram is available in [Appendix B](#) to illustrate this section)

Schools and colleges have an important role to play in supporting the mental health and wellbeing of their learners. Mental health problems can, in some cases, be an indicator that a child has suffered or is at risk of suffering abuse, neglect or exploitation, and or may require early help support.

**Iminster Avenue Nursery School** will commit to undertake the following.

- Our Mental Health lead is Lucy Hobbs. She will support the development of knowledge and act as a point of expertise to promote the wellbeing and mental health of learners. This colleague will have sufficient training in mental health **and** safeguarding for them to carry out their role effectively.
- Early identification of vulnerability to mental health problems by reviewing attendance, behaviour, attainment, and safeguarding records at least on a termly basis.
- Ensure that learners can report and share concerns in line with section [2.1 Reporting a concern](#) of this policy.
- Staff will follow a safeguarding process in terms of reporting concerns outlined in [Appendix B](#) so the DSL/Deputy DSLs (and wider members of the safeguarding team such as the SENDCo) can assess whether there are any other vulnerabilities can be identified and proportionate support considered.
- Staff will ensure the immediate health and safety of a learner who is displaying acute mental health distress. This may require support from emergency services via 999 if the learner is at risk of immediate harm.
- DSLs/Deputies will consider whether a case can be managed internally, through early help, or should involve other agencies as required in line with section [2.4 - Multi-Agency Working](#).
- The setting will communicate and work with the learner and parents/carers to ensure that interventions are in the best interests of the child.
- DSLs will liaise with staff to ensure reasonable adjustments are made and develop ways to support achieving positive educational outcomes.
- Only appropriately trained professionals should attempt to make a diagnosis of a mental health problem – DSLs and the senior leadership team should be able to access specialist advice through targeted services or through their locality [Primary Mental Health Specialists from Child and Family Consultation Services](#).

## 2.9.1 - Contextual Safeguarding Approach to Mental Health

Iminster Avenue Nursery School will ensure that preventative measures in terms of providing safeguarding on the curriculum will provide opportunities for learners to identify when they may need help, and to develop resilience.

The setting will take a 'whole school approach' to:

- deliver high quality teaching around mental health and wellbeing on the curriculum.
- having a culture that promotes mental health and wellbeing;
- having an environment that promotes mental health and wellbeing;
- making sure pupils and staff are aware of and able to access a range of mental health services;
- supporting staff wellbeing
- And being committed to pupil and parent participation

## 2.10 Online Safety

Online safety is an integrated and interwoven theme with other safeguarding considerations. It is essential that the DSL takes a lead on ensuring that interventions are effective. This means coordinating support and engaging with other colleagues in the setting who may have more technological expertise such as the IT manager.

Iminster Avenue Nursery School is committed to addressing online safety issues around content, contact, conduct and commerce. This includes:

- Ensuring that online safety is concerned in relevant policies and procedures.
- Online safety is interwoven in safeguarding training for staff and safeguarding on the curriculum for learners.
- Acknowledging that child on child abuse can happen via mobile and smart technology between individuals and groups. This should be approached in the same process outlined in section [2.7 Responding to incidents of child on child harm](#) and **read in conjunction** of Iminster Avenue Nursery School's policy on the use of mobile smart technology is available from Iminster Avenue Nursery School office.
- Provision of education via remote learning will comply with governmental advice [Safeguarding and remote education during coronavirus \(COVID-19\) - GOV.UK \(www.gov.uk\)](#)
- The effectiveness of the setting's ability to safeguarding learners in respect to filtering and monitoring, information security and access management alongside the above will be reviewed annually. The Head teacher is responsible for ensuring the correct Monitoring and Filtering safeguards are in place.

## Appendix A – Key Guidance for safeguarding issues.

All key education sector policies relevant for education settings can be found on the following webpage <https://www.bristolsafeguardingineducation.org/guidance/>

Other **multi-agency** guidance and policies from the Local Safeguarding Partnerships:

- For Bristol - <https://bristolsafeguarding.org/policies-and-guidance/>
- For South Glos - <http://sites.southglos.gov.uk/safeguarding/library>

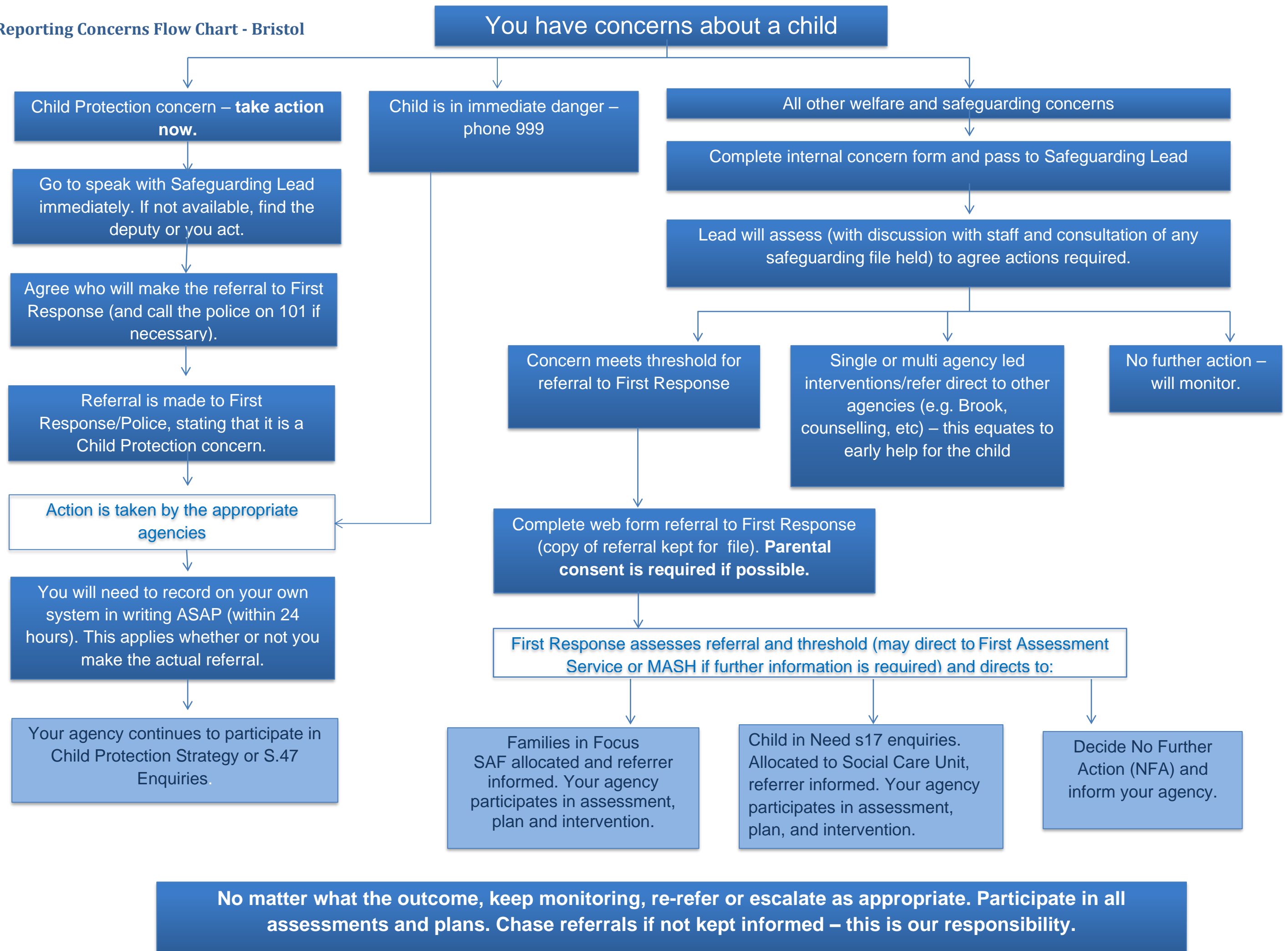
## Appendix B – Reporting concerns

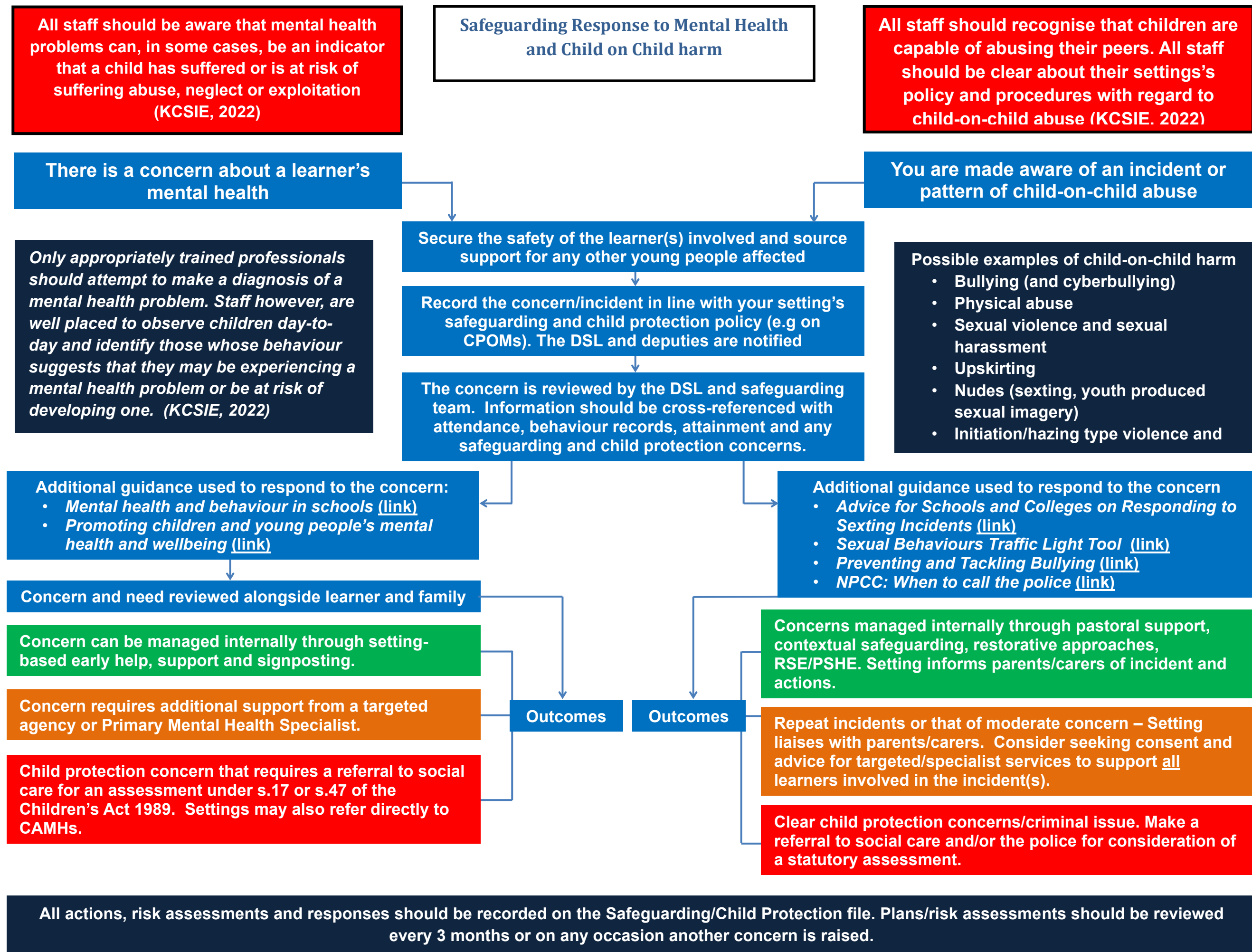
- Reporting Concerns Flow Chart - **Bristol**– [Click here](#)
- Process flow chart responding to child-on-child incidents and Mental Health Problems – [Click here](#)
- Safeguarding contacts poster – Multi-agency contacts in Bristol. – [Click here](#)

- For wider local contacts use the following page - <https://www.bristolsafeguardingineducation.org/local-contacts/>
- Neighbouring Local Authority Contacts - [Click here](#)



## Reporting Concerns Flow Chart - Bristol





## Multi-Agency Contacts for Safeguarding in Education.

**If you have concerns about a child/young person in Bristol ...**

If a child is at immediate risk call the POLICE	<b>POLICE 999</b>	
To make an URGENT referral, i.e. a child is likely to suffer or is suffering significant harm, call children's social care.	<b>FIRST RESPONSE - 0117 9036444</b>	
Out of Hours Referrals	<b>EMERGENCY DUTY TEAM - 01454 615 165</b>	
To make a NON-URGENT referral, contact FIRST RESPONSE using the online form	<b>FIRST RESPONSE Online form</b> <a href="https://www.bristol.gov.uk/social-care-health/make-a-referral-to-first-response">https://www.bristol.gov.uk/social-care-health/make-a-referral-to-first-response</a>	
To raise concerns and ask for advice about radicalisation (also contact First Response).	<b>PREVENT DUTY - 01278 647466</b> <a href="mailto:PreventSW@avonandsomerset.police.uk">PreventSW@avonandsomerset.police.uk</a>	
To liaise with the specialist Safeguarding Police unit	<b>Lighthouse Safeguarding Unit</b> (Avon and Somerset police) 01278 649228 <a href="mailto:LighthouseBristol@avonandsomerset.police.uk">LighthouseBristol@avonandsomerset.police.uk</a>	
For advice and guidance about whether to make a referral	<b>Families in Focus (Targeted Support)</b>	
<b>South</b> 0117 9037770	<b>East Central</b> 0117 3576460	<b>North</b> 0117 3521499

**If you have concerns about a professional working with a child...**

To raise concerns and ask for guidance in relation to the conduct of someone who works with children	<b><u>Local Authority Designated Officer - (LADO)</u></b> T: 0117 9037795 <a href="#">KBSP LADO notification form</a>
--	---

**For information, advice and guidance in relation to safeguarding policy and procedures.**

<b><u>Safeguarding in Education Team</u></b> T: 0117 9222710 E: <a href="mailto:Safeguardingineducationteam@bristol.gov.uk">Safeguardingineducationteam@bristol.gov.uk</a>		
<b>South Advisor</b> Helen Macdonald <a href="mailto:Helen.macdonald@bristol-schools.uk">Helen.macdonald@bristol-schools.uk</a> 07788363760	<b>East Central Advisor</b> Jess Curtis <a href="mailto:jessica.curtis@bristol.gov.uk">jessica.curtis@bristol.gov.uk</a> 07788363338	<b>North Advisor</b> Elisabeth Clark <a href="mailto:elisabeth.clark@bristol.gov.uk">elisabeth.clark@bristol.gov.uk</a> 07824503572

# Safeguarding and Child Protection Policy and Procedures

**2024-  
2025**

Child sexual exploitation & child criminal exploitation	<b>Operation Topaz (Avon and Somerset Police)</b> <a href="https://www.avonandsomerset.police.uk/forms/vul">https://www.avonandsomerset.police.uk/forms/vul</a>	
<b>Safer Options Team - Education inclusion managers</b>		
<b>South</b> <a href="mailto:Ingrid.Hooper@bristol.gov.uk">Ingrid.Hooper@bristol.gov.uk</a>	<b>East Central</b> <a href="mailto:Calum.Paton@bristol.gov.uk">Calum.Paton@bristol.gov.uk</a>	<b>North</b> <a href="mailto:Ross.Moody@bristol.gov.uk">Ross.Moody@bristol.gov.uk</a>
Report a Child Missing from Education	<b>Bristol City Council – Education Welfare</b> <a href="https://www.bristol.gov.uk/schools-learning-early-years/children-missing-education-cme">https://www.bristol.gov.uk/schools-learning-early-years/children-missing-education-cme</a>	
Children affected by Forced Marriage	<b>Forced Marriage Unit</b> T: (0) 20 7008 0151 E: fmu@fco.gov.uk	
Online Safety Advice	<b>Professional Online Safeguarding Helpline</b> T: 0344 381 4772 E: helpline@saferinternet.org.uk	
Reporting online abuse and grooming	<b>Child Exploitation and Online Protection command</b> <a href="https://www.ceop.police.uk/ceop-reporting/">https://www.ceop.police.uk/ceop-reporting/</a>	
FGM advice	<b>NSPCC FGM Helpline</b> T: 0800 028 3550 E: fgmhelp@nspcc.org.uk	
Domestic Abuse support (Bristol)	<b>Directorate of local and national services</b> <a href="https://www.bristol.gov.uk/crime-emergencies/abuse-violence">https://www.bristol.gov.uk/crime-emergencies/abuse-violence</a>	
Young Carers – advice and support.	<b>Carers Support Centre</b> T: 0117 958 9980 W: <a href="https://www.carerssupportcentre.org.uk/young-carers/contact-young-carers/">https://www.carerssupportcentre.org.uk/young-carers/contact-young-carers/</a>	
Whistleblowing professional policy	<b>NSPCC Whistleblowing hotline</b> T: 0800 028 0285 E: help@nspcc.org.uk	
<b><a href="#">Child and Adolescent Mental health</a> (CAMHS)</b>		
<b>Primary Mental Health Specialists (advice) Child and Adolescent Mental Health</b>		
<b>South</b> 0117 3408121	<b>East Central</b> 0117 3408600	<b>North</b> 0117 3546800
Advice around harmful sexualised behaviour.	<b>Be Safe</b> 0117 3408700 W: <a href="https://www.awp.nhs.uk/camhs/camhs-services/HSB-services/be-safe">https://www.awp.nhs.uk/camhs/camhs-services/HSB-services/be-safe</a>	
	<b>Brook Traffic Light Tool</b> <a href="#">CPD: Brook Sexual Behaviours Traffic Light Tool (RSE) Course</a>	

### Other Local Authorities Contacts

Local Authority in which the child is resident	Contact details	Out of hours/ Weekend
<b>South Gloucestershire</b>	<p><b>Access and Responses Team</b></p> <ul style="list-style-type: none"> <li><b>01454 866000</b> - Monday to Thursday 9.00 – 5.00, 4.30 on Friday</li> <li><a href="mailto:accessandresponse@southglos.gov.uk">accessandresponse@southglos.gov.uk</a></li> </ul> <p>Website: <a href="#">Access and Response Teams (ART)   South Gloucestershire Council (southglos.gov.uk)</a></p>	
<b>North Somerset</b>	<p><b>Single Point of Access</b></p> <ul style="list-style-type: none"> <li><b>01275 888 808</b> –Monday-Thursday 8.45am-5pm, Friday 8.45am-4.30pm</li> </ul> <p>Website: <a href="#">Children, young people and families   North Somerset Council (n-somerset.gov.uk)</a></p>	<p><b>Emergency Duty Team</b></p> <p><b>01454 615165</b></p>
<b>Bath and North East Somerset (BANES)</b>	<p><b>Children's Social Work Services</b></p> <ul style="list-style-type: none"> <li><b>01225 396312 or 01225 396313</b> weekdays, 8.30am to 5pm, except Fridays when we're closed from 4.30pm</li> <li><a href="mailto:ChildCare_Duty@bathnes.gov.uk">ChildCare_Duty@bathnes.gov.uk</a></li> </ul> <p>Website: <a href="#">Report a concern about a child   Bath and North East Somerset Council (bathnes.gov.uk)</a></p>	

## Appendix C - Dealing with a disclosure of abuse

**When a child tells me about abuse they have suffered, what must I remember?**

- Stay calm.
- Do not communicate shock, anger, or embarrassment.
- Reassure the child. Tell them you are pleased that they are speaking to you.
- Never promise confidentiality. Assure them that you will try to help but let the child know that you may have to tell other people to do this. State who this will be and why.
- Encourage the child to talk but do not ask "leading questions" or press for information. Use 'Tell Me, Explain to me, Describe to me' (TED) questioning.
- Listen and remember.
- Check that you have understood correctly what the child is trying to tell you.
- Praise the child for telling you. Communicate that they have a right to be safe and protected.
- It is inappropriate to make any comments about the alleged perpetrator.
- Be aware that the child may retract what they have told you. It is essential to record all you have heard.
- At the end of the conversation, tell the child again who you are going to tell and why that person or those people need to know.
- As soon as you can afterwards, make a detailed record of the conversation using the child's own language. Include any questions you may have asked. Do not add any opinions or interpretations.

NB It is not education staff's role to seek disclosures. Their role is to observe that something may be wrong, ask about it, listen, be available and try to make time to talk.

- The 5 'R's are helpful in understanding what professional's duties are in relation to responding to an incident.

**Recognise – Respond – Reassure – Refer - Record**

## Appendix D - Types of abuse and neglect

The Department for Education's Tackle Child Abuse campaign has accessible videos to watch <https://tacklechildabuse.campaign.gov.uk/>

Abuse and neglect are defined as the maltreatment of a child or young person whereby someone may abuse or neglect a child by inflicting harm, or by failing to prevent harm. They may be abused by an adult or adults or by another child or children.

All setting staff should be aware that abuse, neglect and safeguarding issues are rarely standalone events that can be covered by one definition or label. In most cases multiple



issues will overlap with one another. For children with Special Educational Needs and Disabilities (SEND) additional barriers can exist when identifying abuse and neglect, these include:

- assumptions that indicators of possible abuse such as behaviour, mood and injury relate to the child's disability without further exploration
- being more prone to peer group isolation than other children
- the potential for children with SEN and disabilities being disproportionately impacted by behaviours such as bullying, without outwardly showing any signs
- and communication barriers and difficulties in overcoming these barriers.

To address these additional challenges, settings should consider extra pastoral support for children with SEND (KCSIE, 2023).

The following are the definition of abuse and neglect as set out in Working Together to Safeguard Children (2018) however, the ultimate responsibility to assess and define the type of abuse a child or young person may be subject to is that of the Police and Children's Services – our responsibility is to understand what each category of abuse is and how this can impact on the welfare and development of our children and where we have concerns that a child or young person may be at risk of abuse and neglect (one or more categories can apply) to take appropriate action as early as possible.

**Physical abuse:** a form of abuse which may involve hitting, shaking, throwing, poisoning, burning or scalding, drowning, suffocating or otherwise causing physical harm to a child. Physical harm may also be caused when a parent or carer fabricates the symptoms of, or deliberately induces, illness in a child.

**Neglect:** the persistent failure to meet a child's basic physical and/or psychological needs, likely to result in the serious impairment of the child's health or development. Neglect may occur during pregnancy because of maternal substance abuse. Once a child is born, neglect may involve a parent or carer failing to: provide adequate food, clothing and shelter (including exclusion from home or abandonment); protect a child from physical and emotional harm or danger; ensure adequate supervision (including the use of inadequate care-givers); or ensure access to appropriate medical care or treatment. It may also include neglect of, or unresponsiveness to, a child's basic emotional needs.

**Emotional abuse:** the persistent emotional maltreatment of a child such as to cause severe and adverse effects on the child's emotional development. It may involve conveying to a child that they are worthless or unloved, inadequate, or valued only insofar as they meet the needs of another person. It may include not giving the child opportunities to express their views, deliberately silencing them or 'making fun' of what they say or how they communicate. It may feature age or developmentally inappropriate expectations being imposed on children. These may include interactions that are beyond a child's developmental capability as well as



overprotection and limitation of exploration and learning or preventing the child participating in normal social interaction. It may involve seeing or hearing the ill-treatment of another. It may involve serious bullying (including cyberbullying), causing children frequently to feel frightened or in danger, or the exploitation or corruption of children. Some level of emotional abuse is involved in all types of maltreatment of a child, although it may occur alone.

**Sexual abuse:** involves forcing or enticing a child or young person to take part in sexual activities, not necessarily involving a high level of violence, whether or not the child is aware of what is happening. The activities may involve physical contact, including assault by penetration (for example rape or oral sex) or non-penetrative acts such as masturbation, kissing, rubbing and touching outside of clothing. They may also include non-contact activities, such as involving children in looking at, or in the production of, sexual images, watching sexual activities, encouraging children to behave in sexually inappropriate ways, or grooming a child in preparation for abuse (including via the internet). Sexual abuse is not solely perpetrated by adult males. Women can also commit acts of sexual abuse, as can other children.

### Appendix E Specific actions to take on topical safeguarding issues

General or national guidance will not be included here. A summary of specific duties are in [Keeping Children Safe in Education 2023 Annex B](#) and Access to local guidance can be found in [Appendix A](#) of this document.

In recognition that the threshold of child protection is 'likely to suffer' significant harm, **Iminster Avenue Nursery School** may need to make a referral to children's social care. Where possible, this will involve notifying the parent/carers if it does not place the learner at further risk of harm. In all other circumstances information will be shared in line with section [2.2 Information Sharing](#).

It is also important to recognise the importance of liaising with other education settings who may have siblings attending. It is likely that they may hold additional information which will support early identification of harm and in turn develop your assessment of need.

### Child Exploitation – both Child Sexual Exploitation (CSE) and Child Criminal Exploitation (CCE)

**Iminster Avenue Nursery School** will ensure that early help intervention is provided as soon as a concern of exploitation is identified. Discussion and advice will be sought from targeted services to consider what support may be available. The learner and their families will be part of any planning and interventions.

If the learner is at risk of CSE or there is intelligence which indicates that the learner or peer group are at risk of CSE,

- **Ilminster Avenue Nursery School** will share information with Operation Topaz (the police). This information will support proactive activity to disrupt criminal activity in relation to sexual exploitation.
- If the learner is at risk of CCE information should be shared with Bristol's Violence Reduction Unit - Safer Options. The Safer Options Education Inclusion Managers can advise and support settings to manage risk. Targeted support maybe available to disrupt learners from getting involved with criminality.
- Avon and Somerset Police share 'Missing persons' notifications (which a learner is reported missing from home or care) with education settings with a view to support them to take proactive action and reasonable adjustments in relation to behaviour management and achieving positive educational outcomes. These should be stored securely on the learner's Safeguarding/Child Protection file.

## Domestic Abuse

Operation Encompass is a national operation where local police forces notify when the police are called to an incident to domestic abuse. Avon and Somerset have their own version of this and will notify education settings whenever they have responded to a domestic abuse incident. This will enable the education setting to take proactive action and reasonable adjustments in relation to behaviour management and achieving positive educational outcomes.

Under the current information sharing protocol, the education setting **is not permitted** to share his information without seeking consent from Avon and Somerset police in case this may put a victim and learners at further risk of harm. The only exception to this when information is shared with new education setting (part of statutory duties in relation to transfer of the Safeguarding/ Child Protection file, Keeping Children Safe in Education). Additional instructions around this are sent out with every single notification.

- Education settings must have signed up to a Police Safeguarding Notification Briefing to receive these.
- Each setting should have at least 2 members of trained staff able to receive and act upon these notifications.
- Each setting should promote an open culture of safeguarding to enable learners and families to disclose and feel safe to talk about their experiences and what support may be required.

## Female Genital Mutilation

**Mandatory reporting duty:** [Click here for government guidance](#)

This is a legal duty for all professionals undertaking teaching work to report known cases of FGM to the police via 101. This is when they:

1. are informed by a girl under 18 that an act of FGM has been carried out on her; or

2. observe physical signs which appear to show that an act of FGM has been carried out

These cases must be referred to the DSL who will support them to carry out their duty. It is also advised any referrals made to the police under the mandatory reporting duty is followed up with children's social care so an assessment of need and support is concurrently considered.

### Travel:

National guidance has highlighted going on holiday to a risk affected country is cause for concern, local guidance has been developed to prevent discriminatory action against families from risk affected communities.

- Families are encouraged to notify the education setting when they are looking to travel during term time dates.
- This will prompt a conversation with the DSL/ specialist trained member of staff to discuss and explain what FGM is in that; it is significantly harmful and illegal to practice this.
- The setting will complete an [FGM Referral Risk assessment](#) (available on the [Keeping Bristol Safe Partnership website](#)) with the family to identify any support that the family may require in relation to FGM.
- Proportionate action is taken. Referrals to social care should NOT be automatically made – however should be made if there are high risk concerns identified from the FGM Referral Risk Assessment.
- These assessments should be saved onto the child's Safeguarding/Child Protection file to avoid duplication with new incidents of travel.

### Online Safety

- **Annex B of Keeping Children Safe in Education highlights additional actions schools should take to keep learners safe online.**
- For concerns around individual cases where a child has been harmed through online mediums, advice and guidance can be made through the **Professional Online Safeguarding Helpline**, T: 0344 381 4772, E: [helpline@saferinternet.org.uk](mailto:helpline@saferinternet.org.uk)
- Where there have been established cases of online abuse or grooming, the setting should alert - **Child Exploitation and Online Protection command (CEOPS)** <https://www.ceop.police.uk/ceop-reporting/>

**Mental health** – [linked to section within main body of this policy](#)

**Child-on-child Abuse** - [linked to section within main body of this policy](#).

## Serious Youth Violence

To be read in conjunction with the above section around Child Criminal Exploitation. There has been local guidance issued on the issue of [‘Offensive Weapons in Education Settings’](#).

It is important to note that should a weapon be used or there is threat of use, the police should be called immediately.

- The same day a weapon is found Safer Options should be called for a multi-disciplinary assessment of risk.
- Whilst it is acknowledged that the decision to exclude remains with the Headteacher/principal it is recommended that consultation with the Safer Options Education Inclusion Manager is made so as not to further put the child at further risk of harm if they are excluded.
- Alternatives to exclusions should be considered first in recognition that by doing so a learner it may be at further risk of harm out in the community.
- Police will be notified through the multi-agency discussion held at the ‘Out of Court Disposals Panel’ to prevent students unnecessarily getting a criminal record.

## Preventing Radicalisation - The Prevent duty

All settings are subject to a duty under section 26 of the Counter-Terrorism and Security Act 2015 (the CTSA 2015), in the exercise of their functions, to have “due regard to the need to prevent people from being drawn into terrorism”.<sup>110</sup> This duty is known as the Prevent duty.

The Prevent duty should be seen as part of the settings wider safeguarding obligations. Designated safeguarding leads and other senior leaders should familiarise themselves with the revised [Prevent duty guidance: for England and Wales](#), especially paragraphs 57-76, which are specifically concerned with schools (and also covers childcare).

The guidance is set out in terms of four general themes:

- risk assessment,
- working in partnership,
- staff training, and
- IT policies.

## Private Fostering

A private fostering arrangement is one that is made privately (without the involvement of a local authority) for the care of a child:

- under the age of 16 years (under 18, if disabled)

- by someone other than a parent or close relative (\*Close family relative is defined as a 'grandparent, brother, sister, uncle or aunt' and includes half-siblings and step-parents; it does not include great-aunts or uncles, great grandparents or cousins.)
- with the intention that it should last for 28 days or more.

Cases of private fostering arrangements must be reported to children's social care to ensure that needs are adequately made.

Statutory guidance states that this should be done at least 6 weeks before the arrangement is due to start or as soon as you are made aware of the arrangements. Not to do so is a criminal offence.

Further support and reasonable adjustments should be made by the education setting to promote achievement of positive educational outcomes.

## Young Carers

A young carer is a person under 18 who regularly provides emotional and/or practical support and assistance for a family member who is disabled, physically or mentally unwell or who misuses substances.

The setting will support learners who are young carers to appropriate support. To find out what is available locally visit the Bristol City Council Website - <https://www.bristol.gov.uk/social-care-health/support-for-young-carers>

The Carers Support Centre can undertake an assessment of need and provide bespoke support. <https://www.carerssupportcentre.org.uk/young-carers/making-a-referral/>

## Appendix F: safer recruitment and DBS checks – policy and procedures

### Recruitment and selection process

The recruitment steps outlined below are based on part 3 of Keeping Children Safe in Education.

To make sure we recruit suitable people, we will ensure that those involved in the recruitment and employment of staff to work with children have received appropriate safer recruitment training.

We have put the following steps in place during our recruitment and selection process to ensure we are committed to safeguarding and promoting the welfare of children.

### Advertising

When advertising roles, we will make clear:

- / Our school's commitment to safeguarding and promoting the welfare of children
- / That safeguarding checks will be undertaken
- / The safeguarding requirements and responsibilities of the role, such as the extent to which the role will involve contact with children
- / Whether or not the role is exempt from the Rehabilitation of Offenders Act 1974 and the amendments to the Exceptions Order 1975, 2013 and 2020. If the role is exempt, certain spent convictions and cautions are 'protected', so they do not need to be disclosed, and if they are disclosed, we cannot take them into account

### Application forms

Our application forms will:

- / Include a statement saying that it is an offence to apply for the role if an applicant is barred from engaging in regulated activity relevant to children (where the role involves this type of regulated activity)
- / Include a copy of, or link to, our child protection and safeguarding policy and our policy on the employment of ex-offenders

### Shortlisting

Our shortlisting process will involve at least 2 people and will:

- / Consider any inconsistencies and look for gaps in employment and reasons given for them
- / Explore all potential concerns

Once we have shortlisted candidates, we will ask shortlisted candidates to:

- / Complete a self-declaration of their criminal record or any information that would make them unsuitable to work with children, so that they have the opportunity to share relevant information and discuss it at interview stage. The information we will ask for includes:
  - o If they have a criminal history
  - o Whether they are included on the barred list
  - o Whether they are prohibited from teaching

- Information about any criminal offences committed in any country in line with the law as applicable in England and Wales
- Any relevant overseas information

/ Sign a declaration confirming the information they have provided is true

We will also inform candidates that we will carry out an online search on shortlisted candidates as part of our due diligence, to help identify any incidents or issues that are publicly available online.

### **Seeking references and checking employment history**

We will obtain references before interview. Any concerns raised will be explored further with referees and taken up with the candidate at interview.

When seeking references we will:

- / Not accept open references
- / Liaise directly with referees and verify any information contained within references with the referees
- / Ensure any references are from the candidate's current employer and completed by a senior person. Where the referee is school based, we will ask for the reference to be confirmed by the headteacher/principal as accurate in respect to disciplinary investigations
- / Obtain verification of the candidate's most recent relevant period of employment if they are not currently employed
- / Secure a reference from the relevant employer from the last time the candidate worked with children if they are not currently working with children
- / Compare the information on the application form with that in the reference and take up any inconsistencies with the candidate
- / Resolve any concerns before any appointment is confirmed

### **Interview and selection**

When interviewing candidates, we will:

- / Probe any gaps in employment, or where the candidate has changed employment or location frequently, and ask candidates to explain this
- / Explore any potential areas of concern to determine the candidate's suitability to work with children
- / Record all information considered and decisions made

### **Pre-appointment vetting checks**

We will record all information on the checks carried out in the school's single central record (SCR). Copies of these checks, where appropriate, will be held in individuals' personnel files. We follow requirements and best practice in retaining copies of these checks, as set out below.

#### **New staff**

All offers of appointment will be conditional until satisfactory completion of the necessary pre-employment checks. When appointing new staff, we will:

- / Verify their identity
- / Obtain (via the applicant) an enhanced DBS certificate, including barred list information for those who will be engaging in regulated activity (see definition below). We will obtain the certificate before, or as soon as practicable after, appointment, including when using the DBS update service. We will not keep a copy of the certificate for longer than 6 months, but when the copy is



destroyed we may still keep a record of the fact that vetting took place, the result of the check and recruitment decision taken

- / Obtain a separate barred list check if they will start work in regulated activity before the DBS certificate is available
- / Verify their mental and physical fitness to carry out their work responsibilities
- / Verify their right to work in the UK. We will keep a copy of this verification for the duration of the member of staff's employment and for 2 years afterwards
- / Verify their professional qualifications, as appropriate
- / Ensure they are not subject to a prohibition order if they are employed to be a teacher
- / Carry out further additional checks, as appropriate, on candidates who have lived or worked outside of the UK. These could include, where available:
  - o For all staff, including teaching positions: [criminal records checks for overseas applicants](#)
  - o For teaching positions: obtaining a letter from the professional regulating authority in the country where the applicant has worked, confirming that they have not imposed any sanctions or restrictions on that person, and/or are aware of any reason why that person may be unsuitable to teach

We will ensure that appropriate checks are carried out to ensure that individuals are not disqualified under the 2018 Childcare Disqualification Regulations and Childcare Act 2006. Where we take a decision that an individual falls outside of the scope of these regulations and we do not carry out such checks, we will retain a record of our assessment on the individual's personnel file. This will include our evaluation of any risks and control measures put in place, and any advice sought.

**Regulated activity** means a person who will be:

- / Responsible, on a regular basis in a school or college, for teaching, training, instructing, caring for or supervising children; or
- / Carrying out paid, or unsupervised unpaid, work regularly in a school or college where that work provides an opportunity for contact with children; or
- / Engaging in intimate or personal care or overnight activity, even if this happens only once and regardless of whether they are supervised or not

## Existing staff

In certain circumstances we will carry out all the relevant checks on existing staff as if the individual was a new member of staff. These circumstances are when:

- / There are concerns about an existing member of staff's suitability to work with children; or
- / An individual moves from a post that is not regulated activity to one that is; or
- / There has been a break in service of 12 weeks or more

We will refer to the DBS anyone who has harmed, or poses a risk of harm, to a child or vulnerable adult where:

- / We believe the individual has engaged in [relevant conduct](#); or
- / We believe the individual has received a caution or conviction for a relevant (automatic barring either with or without the right to make representations) offence, under the [Safeguarding Vulnerable Groups Act 2006 \(Prescribed Criteria and Miscellaneous Provisions\) Regulations 2009](#); or

- / We believe the 'harm test' is satisfied in respect of the individual (i.e. they may harm a child or vulnerable adult or put them at risk of harm); and
- / The individual has been removed from working in regulated activity (paid or unpaid) or would have been removed if they had not left

## **Agency and third-party staff**

We will obtain written notification from any agency or third-party organisation that it has carried out the necessary safer recruitment checks that we would otherwise perform. We will also check that the person presenting themselves for work is the same person on whom the checks have been made.

## **Contractors**

We will ensure that any contractor, or any employee of the contractor, who is to work at the school has had the appropriate level of DBS check (this includes contractors who are provided through a PFI or similar contract). This will be:

- / An enhanced DBS check with barred list information for contractors engaging in regulated activity
- / An enhanced DBS check, not including barred list information, for all other contractors who are not in regulated activity but whose work provides them with an opportunity for regular contact with children

We will obtain the DBS check for self-employed contractors.

We will not keep copies of such checks for longer than 6 months.

Contractors who have not had any checks will not be allowed to work unsupervised or engage in regulated activity under any circumstances.

We will check the identity of all contractors and their staff on arrival at the school.

For self-employed contractors such as music teachers or sports coaches, we will ensure that appropriate checks are carried out to ensure that individuals are not disqualified under the 2018 Childcare Disqualification Regulations and Childcare Act 2006. Where we decide that an individual falls outside of the scope of these regulations and we do not carry out such checks, we will retain a record of our assessment. This will include our evaluation of any risks and control measures put in place, and any advice sought.

## **Trainee/student teachers**

Where applicants for initial teacher training are salaried by us, we will ensure that all necessary checks are carried out.

Where trainee teachers are fee-funded, we will obtain written confirmation from the training provider that necessary checks have been carried out and that the trainee has been judged by the provider to be suitable to work with children.

In both cases, this includes checks to ensure that individuals are not disqualified under the 2018 Childcare Disqualification Regulations and Childcare Act 2006.

## **Volunteers**

We will:

- / Never leave an unchecked volunteer unsupervised or allow them to work in regulated activity
- / Obtain an enhanced DBS check with barred list information for all volunteers who are new to working in regulated activity
- / Carry out a risk assessment when deciding whether to seek an enhanced DBS check without barred list information for any volunteers not engaging in regulated activity. We will retain a record of this risk assessment
- / Ensure that appropriate checks are carried out to ensure that individuals are not disqualified under the 2018 Childcare Disqualification Regulations and Childcare Act 2006. Where we decide that an individual falls outside of the scope of these regulations and we do not carry out such checks, we will retain a record of our assessment. This will include our evaluation of any risks and control measures put in place, and any advice sought

## **Governors**

All governors will have an enhanced DBS check without barred list information.

They will have an enhanced DBS check with barred list information if working in regulated activity.

All governors will also have a section 128 check (as a section 128 direction disqualifies an individual from being a maintained school governor).

- / [section 128 of the Education and Skills Act 2008](#)). Section 128 checks are only required for local governors if they have retained or been delegated any management responsibilities.
- / Identity
- / Right to work in the UK
- / Other checks deemed necessary if they have lived or worked outside the UK

## Appendix G: allegations of abuse made against staff

### Section 1: allegations that may meet the harms threshold

This section applies to all cases in which it is alleged that a current member of staff, including a supply teacher, volunteer or contractor, has:

- / Behaved in a way that has harmed a child, or may have harmed a child, and/or
- / Possibly committed a criminal offence against or related to a child, and/or
- / Behaved towards a child or children in a way that indicates they may pose a risk of harm to children, and/or
- / Behaved or may have behaved in a way that indicates they may not be suitable to work with children – this includes behaviour taking place both inside and outside of school

If we're in any doubt as to whether a concern meets the harm threshold, we will consult our local authority designated officer (LADO).

We will deal with any allegation of abuse quickly, in a fair and consistent way that provides effective child protection while also supporting the individual who is the subject of the allegation.

A 'case manager' will lead any investigation. This will be the headteacher, or the chair of governors where the headteacher is the subject of the allegation. The case manager will be identified at the earliest opportunity.

Our procedures for dealing with allegations will be applied with common sense and judgement.

### Suspension of the accused until the case is resolved

Suspension of the accused will not be the default position, and will only be considered in cases where there is reason to suspect that a child or other children is/are at risk of harm, or the case is so serious that there might be grounds for dismissal. In such cases, we will only suspend an individual if we have considered all other options available and there is no reasonable alternative.

Based on an assessment of risk, we will consider alternatives such as:

- / Redeployment within the school so that the individual does not have direct contact with the child or children concerned
- / Providing an assistant to be present when the individual has contact with children
- / Redeploying the individual to alternative work in the school so that they do not have unsupervised access to children
- / Moving the child or children to classes where they will not come into contact with the individual, making it clear that this is not a punishment and parents/carers have been consulted
- / Temporarily redeploying the individual to another role in a different location, for example to an alternative school or other work for the local authority.

If in doubt, the case manager will seek views from the school's personnel adviser and the designated officer at the local authority, as well as the police and children's social care where they have been involved.

### Definitions for outcomes of allegation investigations

- / **Substantiated:** there is sufficient evidence to prove the allegation

- / **Malicious:** there is sufficient evidence to disprove the allegation and there has been a deliberate act to deceive, or to cause harm to the subject of the allegation
- / **False:** there is sufficient evidence to disprove the allegation
- / **Unsubstantiated:** there is insufficient evidence to either prove or disprove the allegation (this does not imply guilt or innocence)
- / **Unfounded:** to reflect cases where there is no evidence or proper basis which supports the allegation being made

## Procedure for dealing with allegations

In the event of an allegation that meets the criteria above, the case manager will take the following steps:

- / Conduct basic enquiries in line with local procedures to establish the facts to help determine whether there is any foundation to the allegation before carrying on with the steps below
- / Discuss the allegation with the designated officer at the local authority. This is to consider the nature, content and context of the allegation and agree a course of action, including whether further enquiries are necessary to enable a decision on how to proceed, and whether it is necessary to involve the police and/or children's social care services. (The case manager may, on occasion, consider it necessary to involve the police *before* consulting the designated officer – for example, if the accused individual is deemed to be an immediate risk to children or there is evidence of a possible criminal offence. In such cases, the case manager will notify the designated officer as soon as practicably possible after contacting the police)
- / Inform the accused individual of the concerns or allegations and likely course of action as soon as possible after speaking to the designated officer (and the police or children's social care services, where necessary). Where the police and/or children's social care services are involved, the case manager will only share such information with the individual as has been agreed with those agencies
- / Where appropriate (in the circumstances described above), carefully consider whether suspension of the individual from contact with children at the school is justified or whether alternative arrangements such as those outlined above can be put in place. Advice will be sought from the designated officer, police and/or children's social care services, as appropriate
- / Where the case manager is concerned about the welfare of other children in the community or the individual's family, they will discuss these concerns with the DSL and make a risk assessment of the situation. If necessary, the DSL may make a referral to children's social care
- / **If immediate suspension is considered necessary**, agree and record the rationale for this with the designated officer. The record will include information about the alternatives to suspension that have been considered, and why they were rejected. Written confirmation of the suspension will be provided to the individual facing the allegation or concern within 1 working day, and the individual will be given a named contact at the school and their contact details
- / **If it is decided that no further action is to be taken** in regard to the subject of the allegation or concern, record this decision and the justification for it and agree with the designated officer what information should be put in writing to the individual and by whom, as well as what action should follow both in respect of the individual and those who made the initial allegation
- / **If it is decided that further action is needed**, take steps as agreed with the designated officer to initiate the appropriate action in school and/or liaise with the police and/or children's social care services as appropriate
- / Provide effective support for the individual facing the allegation or concern, including appointing a named representative to keep them informed of the progress of the case and considering what other support is appropriate. Support can be sought from LA services and/or trade unions.

- / Inform the parents or carers of the child/children involved about the allegation as soon as possible if they do not already know (following agreement with children's social care services and/or the police, if applicable). The case manager will also inform the parents or carers of the requirement to maintain confidentiality about any allegations made against teachers (where this applies) while investigations are ongoing. Any parent or carer who wishes to have the confidentiality restrictions removed in respect of a teacher will be advised to seek legal advice
- / Keep the parents or carers of the child/children involved informed of the progress of the case (only in relation to their child – no information will be shared regarding the staff member)
- / Make a referral to the DBS where it is thought that the individual facing the allegation or concern has engaged in conduct that harmed or is likely to harm a child, or if the individual otherwise poses a risk of harm to a child

We will inform Ofsted of any allegations of serious harm or abuse by any person living, working, or looking after children at the premises (whether the allegations relate to harm or abuse committed on the premises or elsewhere), and any action taken in respect of the allegations. This notification will be made as soon as reasonably possible and always within 14 days of the allegations being made. (Early Years Providers).

If the school is made aware that the secretary of state has made an interim prohibition order in respect of an individual, we will immediately suspend that individual from teaching, pending the findings of the investigation by the Teaching Regulation Agency.

Where the police are involved, wherever possible the school will ask the police at the start of the investigation to obtain consent from the individuals involved to share their statements and evidence for use in the school's disciplinary process, should this be required at a later point.

### **Additional considerations for supply teachers and all contracted staff**

If there are concerns or an allegation is made against someone not directly employed by the school, such as a supply teacher or contracted staff member provided by an agency, we will take the actions below in addition to our standard procedures.

- / We will not decide to stop using an individual due to safeguarding concerns without finding out the facts and liaising with our LADO to determine a suitable outcome
- / The governing board will discuss with the agency whether it is appropriate to suspend the individual, or redeploy them to another part of the school, while the school carries out the investigation
- / We will involve the agency fully, but the school will take the lead in collecting the necessary information and providing it to the LADO as required
- / We will address issues such as information sharing, to ensure any previous concerns or allegations known to the agency are taken into account (we will do this, for example, as part of the allegations management meeting or by liaising directly with the agency where necessary)

When using an agency, we will inform them of our process for managing allegations, and keep them updated about our policies as necessary, and will invite the agency's HR manager or equivalent to meetings as appropriate.

### **Timescales**

We will deal with all allegations as quickly and effectively as possible and will endeavour to comply with the following timescales, where reasonably practicable:

- / Any cases where it is clear immediately that the allegation is unsubstantiated or malicious should be resolved within 1 week

- / If the nature of an allegation does not require formal disciplinary action, appropriate action should be taken within 3 working days
- / If a disciplinary hearing is required and can be held without further investigation, this should be held within 15 working days

However, these are objectives only and where they are not met, we will endeavour to take the required action as soon as possible thereafter.

## Specific actions

### Action following a criminal investigation or prosecution

The case manager will discuss with the local authority's designated officer whether any further action, including disciplinary action, is appropriate and, if so, how to proceed, taking into account information provided by the police and/or children's social care services.

### Conclusion of a case where the allegation is substantiated

If the allegation is substantiated and the individual is dismissed or the school ceases to use their services, or the individual resigns or otherwise ceases to provide their services, the school will make a referral to the DBS for consideration of whether inclusion on the barred lists is required.

If the individual concerned is a member of teaching staff, the school will consider whether to refer the matter to the Teaching Regulation Agency to consider prohibiting the individual from teaching.

### Individuals returning to work after suspension

If it is decided on the conclusion of a case that an individual who has been suspended can return to work, the case manager will consider how best to facilitate this.

The case manager will also consider how best to manage the individual's contact with the child or children who made the allegation, if they are still attending the school.

### Unsubstantiated, unfounded, false or malicious reports

If a report is:

- / Determined to be unsubstantiated, unfounded, false or malicious, the DSL will consider the appropriate next steps. If they consider that the child and/or person who made the allegation is in need of help, or the allegation may have been a cry for help, a referral to children's social care may be appropriate
- / Shown to be deliberately invented, or malicious, the school will consider whether any disciplinary action is appropriate against the individual(s) who made it

### Unsubstantiated, unfounded, false or malicious allegations

If an allegation is:

- / Determined to be unsubstantiated, unfounded, false or malicious, the LADO and case manager will consider the appropriate next steps. If they consider that the child and/or person who made the allegation is in need of help, or the allegation may have been a cry for help, a referral to children's social care may be appropriate



- / Shown to be deliberately invented, or malicious, the school will consider whether any disciplinary action is appropriate against the individual(s) who made it

## Confidentiality and information sharing

The school will make every effort to maintain confidentiality and guard against unwanted publicity while an allegation is being investigated or considered.

The case manager will take advice from the LADO, police and children's social care services, as appropriate, to agree:

- Who needs to know about the allegation and what information can be shared
- How to manage speculation, leaks and gossip, including how to make parents or carers of a child/children involved aware of their obligations with respect to confidentiality
- What, if any, information can be reasonably given to the wider community to reduce speculation
- How to manage press interest if, and when, it arises

## Record-keeping

The case manager will maintain clear records about any case where the allegation or concern meets the criteria above and store them on the individual's confidential personnel file for the duration of the case.

The records of any allegation that, following an investigation, is found to be malicious or false will be deleted from the individual's personnel file (unless the individual consents for the records to be retained on the file).

For all other allegations (which are not found to be malicious or false), the following information will be kept on the file of the individual concerned:

- A clear and comprehensive summary of the allegation
- Details of how the allegation was followed up and resolved
- Notes of any action taken, decisions reached and the outcome
- A declaration on whether the information will be referred to in any future reference

In these cases, the school will provide a copy to the individual, in agreement with children's social care or the police as appropriate.

Where records contain information about allegations of sexual abuse, we will preserve these for the Independent Inquiry into Child Sexual Abuse (IICSA), for the term of the inquiry. We will retain all other records at least until the individual has reached normal pension age, or for 10 years from the date of the allegation if that is longer.

## References

When providing employer references, we will:

- / Not refer to any allegation that has been found to be false, unfounded, unsubstantiated or malicious, or any repeated allegations which have all been found to be false, unfounded, unsubstantiated or malicious
- / Include substantiated allegations, provided that the information is factual and does not include opinions

## Learning lessons

After any cases where the allegations are *substantiated*, the case manager will review the circumstances of the case with the local authority's designated officer to determine whether there are any improvements that we can make to the school's procedures or practice to help prevent similar events in the future.

This will include consideration of (as applicable):

- Issues arising from the decision to suspend the member of staff
- The duration of the suspension
- Whether or not the suspension was justified
- The use of suspension when the individual is subsequently reinstated. We will consider how future investigations of a similar nature could be carried out without suspending the individual

For all other cases, the case manager will consider the facts and determine whether any improvements can be made.

## Non-recent allegations

Abuse can be reported, no matter how long ago it happened.

We will report any non-recent allegations made by a child to the LADO in line with our local authority's procedures for dealing with non-recent allegations.

Where an adult makes an allegation to the school that they were abused as a child, we will advise the individual to report the allegation to the police.

## Section 2: concerns that do not meet the harm threshold

The section is based on 'Section 2: Concerns that do not meet the harm threshold' in part 4 of Keeping Children Safe in Education. This section applies to all concerns (including allegations) about members of staff, including supply teachers, volunteers and contractors, which do not meet the harm threshold set out in section 1 above.

Concerns may arise through, for example:

- / Suspicion
- / Complaint
- / Safeguarding concern or allegation from another member of staff
- / Disclosure made by a child, parent or other adult within or outside the school
- / Pre-employment vetting checks

We recognise the importance of responding to and dealing with any concerns in a timely manner to safeguard the welfare of children.

## Definition of low-level concerns

The term 'low-level' concern is any concern – no matter how small – that an adult working in or on behalf of the school may have acted in a way that:

- / Is inconsistent with the staff code of conduct, including inappropriate conduct outside of work, **and**
- / Does not meet the allegations threshold or is otherwise not considered serious enough to consider a referral to the designated officer at the local authority

Examples of such behaviour could include, but are not limited to:

- / Being overly friendly with children
- / Having favourites
- / Taking photographs of children on their mobile phone
- / Engaging with a child on a one-to-one basis in a secluded area or behind a closed door
- / Humiliating pupils

## Sharing low-level concerns

We recognise the importance of creating a culture of openness, trust and transparency to encourage all staff to confidentially share low-level concerns so that they can be addressed appropriately.

We will create this culture by:

- / Ensuring staff are clear about what appropriate behaviour is, and are confident in distinguishing expected and appropriate behaviour from concerning, problematic or inappropriate behaviour, in themselves and others
- / Empowering staff to share any low-level concerns
- / Empowering staff to self-refer
- / Addressing unprofessional behaviour and supporting the individual to correct it at an early stage
- / Providing a responsive, sensitive and proportionate handling of such concerns when they are raised
- / Helping to identify any weakness in the school's safeguarding system
- / Regular supervision and an effective staff well-being culture.

## Responding to low-level concerns

If the concern is raised via a third party, the headteacher will collect evidence where necessary by speaking:

- / Directly to the person who raised the concern, unless it has been raised anonymously
- / To the individual involved and any witnesses

The headteacher will use the information collected to categorise the type of behaviour and determine any further action, in line with the school's code of conduct. The headteacher will be the ultimate decision-maker in respect of all low-level concerns, though they may wish to collaborate with the DSL.

## Record keeping

All low-level concerns will be recorded in writing. In addition to details of the concern raised, records will include the context in which the concern arose, any action taken and the rationale for decisions and action taken.

Records will be:

- / Kept confidential, held securely and comply with the DPA 2018 and UK GDPR
- / Reviewed so that potential patterns of concerning, problematic or inappropriate behaviour can be identified. Where a pattern of such behaviour is identified, we will decide on a course of action, either through our disciplinary procedures or, where a pattern of behaviour moves from a concern to meeting the harms threshold as described in section 1 of this appendix, we will refer it to the designated officer at the local authority
- / Retained at least until the individual leaves employment at the school

Where a low-level concern relates to a supply teacher or contractor, we will notify the individual's employer, so any potential patterns of inappropriate behaviour can be identified.

## References

We will not include low-level concerns in references unless:

- / The concern (or group of concerns) has met the threshold for referral to the designated officer at the local authority and is found to be substantiated; and/or
- / The concern (or group of concerns) relates to issues which would ordinarily be included in a reference, such as misconduct or poor performance