

# TERM 1 : HAPPY AT NURSERY

## INTENT

## IMPLEMENT

## IMPACT



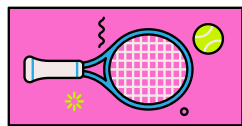
PSED: COME IN HAPPILY, JOIN IN WITH ROUTINES, MAKE RELATIONSHIPS WITH KEY PERSON, EXPRESS EMOTIONS.

SETTLE INTO NEW ENVIRONMENT, DEVELOP TRUSTING RELATIONSHIPS, MAKE DECISIONS AND SELECT RESOURCES.



CAL: MAKES GESTURES AND POINTS, BEGINNING TO USE SINGLE WORDS NAMING SOME FAMILIAR RESOURCES.

CAN ASK FOR HELP, CAN EXPRESS NEEDS, CAN COMBINE WORDS, BEGINNING TO USE SIMPLE SENTENCES.



PD: EXPLORE LARGE MOVEMENTS, MAKE LARGE MARKS, EAT WITH A SPOON/FORK.

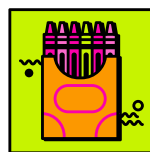
MAKE SNIPS WITH SCISSORS, INDEPENDENTLY TRY SELF-HELP SKILLS, DEVELOP SHOULDER PIVOT.



LIT: ENJOYS LOOKING AT BOOKS, CAN LISTEN FOR ENVIRONMENTAL SOUNDS, CAN MAKE LINES AND MARKS WITH DIFFERENT TOOLS.



MATHS: MATCH SOME OBJECTS OR PICTURES THAT ARE THE SAME, IDENTIFY "ONE" AND "ANOTHER ONE", BEGIN TO JOIN IN WITH NUMBER SONGS/RHYMES.



JOIN A LARGE GROUP AND BEGIN TO JOIN IN WITH ACTIONS AND SONGS, EXPLORE INSTRUMENTS THAT SHAKE.



UW: COMMUNICATE ABOUT FAMILY, NOTICE THINGS THAT ARE THE SAME

CORE BOOKS: ENJOY SHARING STORIES, JOIN IN WITH SOUNDS IN STORIES, TEXTS WITH SIMPLE RHYTHMS.

TALES TOOLKIT: JOIN IN WITH A GROUP, NAME RESOURCES, INTRODUCE STORY COMPONENTS

WELL COMM: BASELINE ASSESSMENT, IDENTIFY VOCABULARY GAPS, PLAN GROUPS FOR FOLLOWING TERM

SUBITISING: MATCH THE SAME, IDENTIFY ONE AND ANOTHER ONE

CURRICULUM VOCABULARY: NAME EMOTIONS, NAME RESOURCES, MOVEMENT VERBS, ROUTINES, SAME, DIFFERENT

I have a positive relationship with familiar adults at Nursery.

I like to do things for myself at Nursery.

I am interested in friends at Nursery.

I can explore and find the things I want.

I can communicate my needs and ask for help, sometimes with support.

I can follow the routine, sometimes with help.

I make lines and marks, sometimes with purpose

I can use different equipment, beginning to make snips in paper with scissors.

I know what belongs to me and where to find it.

I can join a large group, sometimes joining in with singing.

I can match objects/pictures that are the same.

I can identify "one" and "another one".